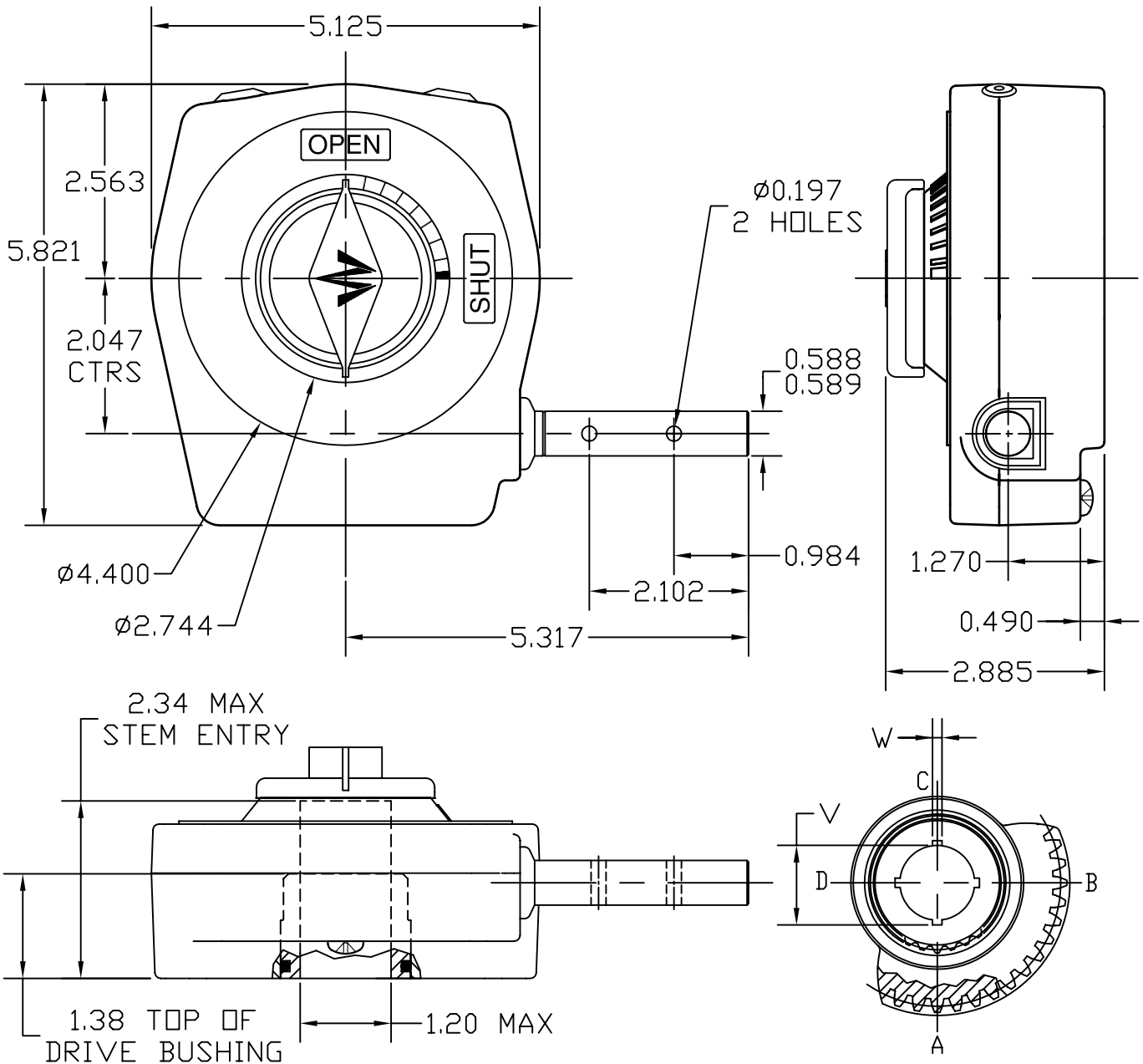


ACTUATOR: 9804

SLO39



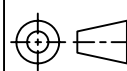
OUTPUT KEYWAY DETAILS  
(SHOWN IN OPEN POSITION)

GENERAL INFORMATION

TRAVEL.....	90° ±5° AT BOTH ENDS	MAX. OUTPUT TORQUE (1000 CYCLES)...	5280 IN-LBS
RATIO.....	40:1	MAX. OUTPUT TORQUE (2000 CYCLES)...	4400 IN-LBS
URNS TO CLOSE.....	10	MAX. INPUT TORQUE (1000 CYCLES).....	480 IN-LBS
MECH. ADVANTAGE.....	11 ±10%	MAX. INPUT TORQUE (2000 CYCLES).....	400 IN-LBS

MOUNTING HOLE DETAIL: PREFERRED....FA12 (4 x 1/2-13 ON 4.95 BCD)  
 (MSS SP-101)                      MAXIMUM.....FA12  
    MINIMUM.....FA07 (4 x 5/16-18 ON 2.75 BCD)

APPROXIMATE WEIGHT.....5.0 LB



DIMENSIONS  
IN  
INCHES

SCALE

1:2

DRAWING  
No.

9804

THIS PRINT IS CONFIDENTIAL AND IS THE PROPERTY OF MASTERGEAR. THIS PRINT SHALL NOT BE USED, COPIED OR REPRODUCED IN WHOLE OR IN PART NOR SHALL THE CONTENTS BE REVEALED IN ANY MANNER TO ANYONE UNLESS WRITTEN PERMISSION IS OBTAINED FROM MASTERGEAR. ©

NJC

REV. A  
4/14/05